

**MINUTES OF BIGGLESWADE TOWN ANNUAL ASSEMBLY HELD ON TUESDAY 05 MAY 2015 AT
BIGGLESWADE TOWN COUNCIL CHAMBER, SAFFRON ROAD, BIGGLESWADE**

Present: Cllr Mrs H Ramsay (Chair), Cllr D Lawrence, Cllr Mrs J Lawrence, Cllr M North,
Cllr B Briars, Cllr Mrs M Russell, Cllr D Albone, Cllr P Biernis
Rob McGregor – Town Clerk
Mike Thorn – Deputy Town Clerk
Angela Thomas – Administrative Assistant
Jan Durn – Administrative Assistant
Members of the public – 7

1. APOLOGIES

Apologies were received from Cllr Mrs W Smith

2. MINUTES OF MEETINGS

The meeting received and adopted the Minutes of the Town Assembly held on Tuesday 27 May 2014.

3. MATTERS ARISING

There were no Matters Arising from the minutes of the Town Assembly 27 May 2014.

Re: page 1, request that an invitation be issued to the Chief Constable to attend a Committee meeting to cover areas of responsibility. Cllr Mrs H Ramsay confirmed that the Chief Constable had been invited and did attend the meeting.

4. ANNUAL REPORT OF BIGGLESWADE TOWN COUNCIL

The Annual Report was presented by Cllr Mrs Hazel Ramsay.

It has been a pleasure and a privilege to serve once again as your Town Mayor. During the year, as well as my duties as Chair of the Council, I have attended over 30 events acting as an ambassador for Biggleswade at Civic events throughout the Central Bedfordshire area and as a representative of Biggleswade Council I have also enjoyed visiting our schools, voluntary support groups, clubs, organisations and businesses. Through their commitment and dedication their leaders and helpers make a valuable, and often under rated contribution to our community and I thank all of you for your invitations and your hospitality.

The Biggleswade/Central Beds Council Joint Committee continues to meet on a regular basis enabling both Councils together with representatives from the Biggleswade Chamber of Trade to discuss local issues and their impact on our town. The new London Road Retail Park is progressing well and we are continuing to monitor the planning conditions and development to ensure that Biggleswade benefits from this development while retaining the character and local businesses on the Market Square.

Your councillors have continued to work on your behalf to progress the issues that affect our town and I am pleased to say that we are soon to have a public consultation about the proposed plans to resolve the parking problems in the town.

The Biggleswade Civic Service was held on March 1st at the Trinity Methodist Church. The service this year was held to celebrate the Biggleswade 'anniversaries' of our voluntary groups and organisations. I am pleased that so many representatives were able to attend the service held in their honour.

On 21st September (World Peace Day) Biggleswade Council supported the Biggleswade Branch of the Royal British Legion in holding a First World War Centenary Commemoration Service in our market Square. It was a poignant service reflecting on the sacrifices made by so many men and women especially those from Biggleswade.

On September 27th we held a second successful Macmillan Coffee morning in the Council Chamber which was well supported and raised over £200 for a really worthwhile cause.

For the first time the format of the Xmas Lights 'switching on' ceremony was changed. We held a Xmas Fair which started at lunch time. There were many stalls selling a variety of gifts, confectionery, cakes and hot food! The stage was used throughout the Fair by local school and adult choirs and presentations were made in the evening for the best Xmas window before the 'switching on' of the lights.

I thank all our Councillors for their commitment to the Council and to Biggleswade in attending the fortnightly Council meetings as well as the various extra committee meetings. Our Councillors and staff work very much as a team and I am sure that without the support of our admin staff, ground staff, and the advice and guidance of our Town Clerk and his deputy we would not be able to accomplish very much!

Our Council meetings are held on alternate Tuesdays and are open to the public so please do come along to a meeting and see the Council in action!

I am glad to have had the opportunity to serve Biggleswade again as Town Mayor and from meeting so many people at events and from various organisations it is clear that Biggleswade while taking pride in its heritage is confidently moving forward to its future.

5. REPORTS

a. FINANCIAL ACCOUNTS YEAR ENDING 31 MARCH 2015

The Financial Accounts for year ending 31st March 2015 were read out by Cllr M North.

Summary of Results for the Year

The council achieved a generous (£55,000) surplus for the year, far in excess of the positions anticipated at the time of Budget and Precept Setting in January 2015 where Income & Expenditure were forecast to be roughly the same. A significant contribution to this result was as a result of an underspend on Cost Centre 215 – Recreation Grounds of £35,000 and Capital Grants received that were not anticipated when the budget was set.

Interest earned on Council funds increased from £649 in the year ended 31st March 2014 to £1,775 in the year just ended. The balance of the surplus was achieved by various cost savings where possible.

Major Activities

During the year the council also undertook the following projects during the year (all funded from previously earmarked reserves):

1. Market

New fixtures were purchased for the market at a cost of £18,409.

2. Bowls Club

Fencing was installed at Drove Road at a cost of £11,920.

3. Car Parks

There have been various works and a Parking Study carried out to determine a successful strategy for Biggleswade Parking in the future.

4. Court Room Staircase

The lift in the Court Room was replaced with a stair case at a cost of £3,150.

Biggleswade Town Council's finances remain in an excellent position with over £650,000 in Bank Accounts which is used to finance a healthy General Reserve of £320,000 and Earmarked Reserves of £330,000.

Please note that the accounts have not been finalized for 2014-15 and as such the above figures may be subject to change but are fairly indicative of the council's performance this year.

b. PUBLIC LAND AND OPEN SPACES

The Public Land and Open Spaces report was read out by Cllr. M North

Regular Work

The regular work of the ground staff team continues to increase. The budget for next year allows for an increase in staff numbers as the Council takes on increasing responsibility for new public areas in the development east of Biggleswade. The regular work includes litter collection, grass cutting, hedge cutting and weed control. There is also a continuing workload of maintenance of fences, pavilions and play equipment.

We express our thanks for the hard work and dedication of all the Council staff who perform such an important role for the town.

Recreation Grounds

A lot of the activity for the year has focussed on the recreation grounds and play equipment.

The costs of specific projects for recreation grounds during the last year is set out below:

Fairfield Recreation Ground – New Swings, slide, seesaw and solar spinner	£21,175
Drove Road Tennis Courts – New Fencing	£11,920
Kitelands Recreation Ground – Wet pour under Swings, Roundabout & Super Nova	£9,112
Kitelands Recreation Ground – New Super Nova	£3,057
Franklin Recreation Ground – New Wet pour under Swings and Hang Glider	£7,712
Jubilee Recreation Ground – Playground Safety Works	£2,820
Fairfield Road Cricket Pavilion – Electrical Works	£2,695
New benches – Franklin, Kitelands and Fairfield	£2,500
New Litter Bins	
£1,614	
General Repairs, Maintenance and Inspection Costs Play Equipment	£3,642

TOTAL

£66,247

The recreation area in Brunel Drive is expected to be taken under the control of the Council later this year after lengthy negotiations. The need for improvements to and replacement of play equipment is currently under review.

The future of the Jubilee recreation ground is being considered after the removal of unsatisfactory play equipment some months ago.

Planning has started to renew the play equipment in Poppyfields.

Allotments

Road maintenance has continued throughout the year and also a replacement bridge has been constructed at a cost of £5,500. We are at an early stage of exploring the possibility of increasing the space available for allotments.

Sports Pitches

We have held useful meetings with the Cricket Club and Biggleswade United Football Club who use Council administered premises. The Council is supportive of the development plans of these clubs which provide valuable facilities to the community.

Finally, on a personal note I would like to thank my predecessor, Cllr Wendy Smith who performed a valuable role for many years and brought the work on renewing the play areas into being.

c. **TOWN CENTRE MANAGEMENT 2014 – 2015**

The Town Centre Management Report 2014-2015 was read out by Cllr Mrs Madeline Russell.

The last twelve months have again been busy. Town Centre Management continues to deal with some difficult but key issues for the town, the biggest one of which is parking.

There continues to be a lack of sufficient parking overall for all those who wish to come into Biggleswade for whatever reason and so the Town Council's focus has been on **making the most of the existing parking and finding extra spaces** wherever possible.

Our hopes for a multi-storey car park in **Bonds Lane** have stalled and it is now unlikely to go ahead. We still hope that we can negotiate with the owner of the site to clear it and use it for parking until the owner is ready to develop it.

We have identified some places around the town centre where a few extra parking spaces could be put into use and hope that Central Bedfordshire Council, who control on-street parking, will be able to implement these within the next few months.

Regarding the off-street parking which we own or lease, the Town Council has decided to **drain, surface and mark out three of its main car parks**: Rose Lane, St. Andrew's Street and Mill Lane. The improvements will cost over £105,000 but should give us some 25-30 extra spaces overall. Contractors are already working in Rose Lane but issues with the drainage have caused a few days' delay. During the period that Rose Lane is out of use, we have lifted the restrictions on Chestnut Avenue car park to ease the situation with overnight parking. There is also unrestricted parking at Dan Albone.

Still on **Rose Lane**, the owner (the Lord of the Manor) having withdrawn from the sale of the car park, we were able to successfully negotiate a new seven-year lease from 1st May 2014.

The **lease on the Dan Albone** car park also expired last year and we have negotiated a new fifteen-year lease from February 2014.

Central Bedfordshire Council have decided to go ahead with restrictions on **parking in residential areas** close to the railway station where commuters leave their cars all day, often parked inconsiderately. There will be an informal public consultation in May with the formal consultation in July. Work should then go ahead immediately except in areas where there is no agreement on the type of restrictions residents want.

The Town Council is pleased that restrictions are going to be brought in. We have been asking for them in some areas for the last two years. However, we have had to consider the effect on our off-street car parks when some residential streets are no longer available for all-day parking.

For this reason, the Town Council has appointed a company to **manage our car parks**. There will be an initial cost for signage and then an annual management fee of £13,000. In conjunction with the management company, it has been agreed that the existing parking orders under criminal law should be lifted and new ones under civil law put in place. There is a formal process for lifting the current orders and we have asked Central Bedfordshire Council to do this for us. The Town Council will then have to decide what new regulations to put in place to give a reasonable spread of medium to long-term parking to serve both visitors to the town and those who come here to work. We must also provide some overnight parking where appropriate.

These issues were considered when the Town Council produced its **Biggleswade Parking Strategy** in January 2014. Since then, the Council has paid for some modelling to be done by

Central Bedfordshire Council's parking consultants and the results of this will also be taken into account along with the responses received when we published our Strategy last year.

Moving on from parking, we have also been looking at some issues of traffic circulation. We have an outstanding request to Central Bedfordshire Council for the **reversal of Hitchin Street** with the pedestrianisation of the top section from Bonds Lane to the Market Square. This would also require the reversal of Bonds Lane.

The Town Council has also pushed for a one-way system round **Sun Street and St. John's Street** and paid for Central Bedfordshire Council's highways engineers to do a feasibility study. St. John's Street will be one-way towards the railway and Sun Street one-way down towards Shortmead Street. The northern part of Rose Lane will be one-way from St. John's Street to Sun Street. The detailed design work has been done and, after consultation, we hope to see the scheme implemented this year.

There has long been a need for a **pedestrian crossing** on London Road between Elm Road and Eagle Farm Road where students from Stratton School cross, as do commuters walking to the station. The Town Council was prepared to part fund the crossing but Central Bedfordshire Council had S.106 funding available and the crossing is currently being installed. It is light-controlled but the Town Council was able to persuade CBC that there was no need for a raised table.

The proposed **Transport Interchange** at the station is still being developed by Central Bedfordshire Council. Progress is slow. The design is difficult because of the restrictions on the Network Rail land due to their own infrastructure. The funding, though, is available when the design difficulties can be overcome.

The management of **'A' Boards** and other retail items on public land has not been implemented as quickly as we would have wished. This has been partly due to capacity issues within the Town Council since a lot of work is involved but also a recognition that businesses in the town have still been struggling. However, there has been such a proliferation of this signage, often causing obstructions, particularly for mobility scooters and pushchairs, that implementation will become a priority over the next few months.

Much time and effort was put in during the autumn planning a **Christmas Fair** rather than the traditional ceremony for the switch-on of the Christmas lights. A TCM working party met regularly and co-opted Hayley Down, who worked mightily to make the event a success.

The day started with Christmas music from a steam organ and, from noon, there was an abundance of Christmas market stalls offering festive food and gifts and also various kinds of street food.

For younger children, Santa could be found and there was a fairground to be enjoyed. There were stars to be put on the Christmas tree with messages to Santa or Christmas greetings to loved ones.

The stage was busy all afternoon with a succession of choirs, first from schools in the town and then adult groups. Later, we moved on to Edward Peake Steel Band and the Stotfold Salvation Army Band, which led into the Community Carol Service and finally the switch-on of the lights by the Carnival Court.

During the proceedings, the Mayor announced the results of the Best Dressed Window Award. We were delighted by the number of shops which took part.

The Christmas Fair was well-supported by the town and there was much appreciation from all those who attended. The Town Council now hopes to make this an annual event which will improve and evolve over the years.

We are still developing the **Christmas lights**, which again were increased from the previous year. The bright white and soft white lights contrasting with red provided a magical display which brought the town to life for the festive period.

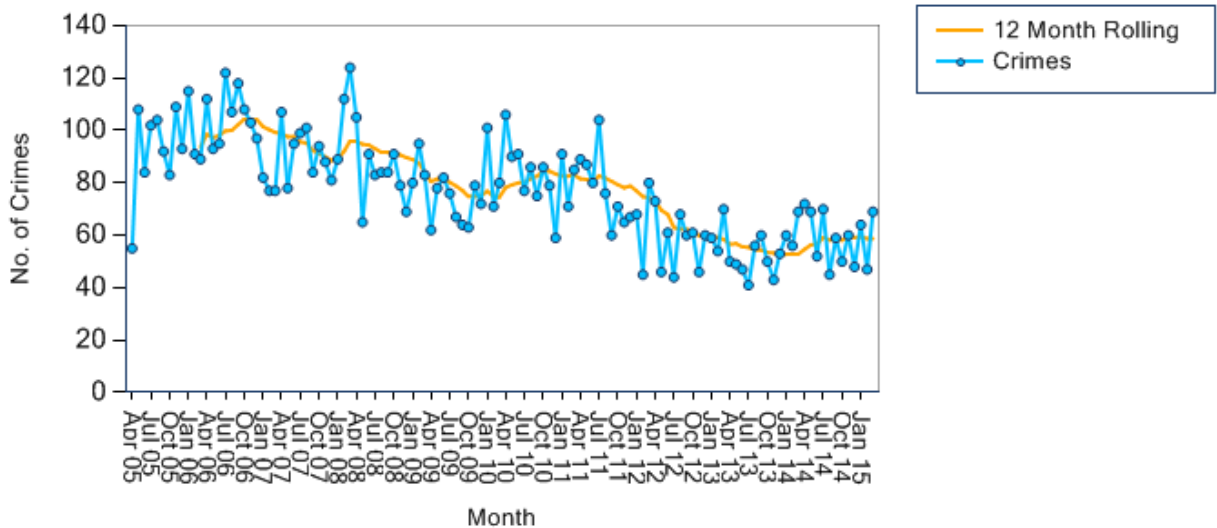
It was the third and final year of the contract and the Council will go out to tender for the provider of lights from 2015 onwards.

Much has been achieved over the four years of this Council but there is still a deal more to do as we hand over to a new Town Centre Management team after the election.

d. ANNUAL CRIME FIGURES – BEDFORDSHIRE POLICE

Biggleswade Town Council Annual Police Report 2015

Long Term Trend – Biggleswade Annual Report 2014/2015



Crime Type Breakdown in last 12 months

Financial Year	Apr	May	Jun	Jul	Aug	Sep	Oct	Nov	Dec	Jan	Feb	Mar	Total	Avg
Current Financial Year: 2014/2015	72	69	52	70	45	59	50	60	48	64	47	69	705	58.75
Financial Year: 2013/2014	50	49	47	41	56	60	50	43	53	60	56	69	634	52.83
Financial Year: 2012/2013	73	46	61	44	68	60	61	46	60	59	54	70	702	58.50
Financial Year: 2011/2012	89	87	80	104	76	60	71	65	67	68	45	80	892	74.33
Financial Year: 2010/2011	106	90	91	77	86	75	86	79	59	91	71	85	996	83.00
Financial Year: 2009/2010	62	78	82	76	67	64	63	79	72	101	71	80	895	74.58
Financial Year: 2008/2009	105	65	91	83	84	84	91	79	69	80	95	83	1009	84.08
Financial Year: 2007/2008	107	78	95	99	101	84	94	88	81	89	112	124	1152	96.00
Financial Year: 2006/2007	112	93	95	122	107	118	108	103	97	82	77	77	1191	99.25
Financial Year: 2005/2006	55	108	84	102	104	92	83	109	93	115	91	89	1125	93.75

Long term crime breakdown for each of the following offences

Minutes Ann Assembly 05052015

Domestic Burglary

Financial Year	Apr	May	Jun	Jul	Aug	Sep	Oct	Nov	Dec	Jan	Feb	Mar	Total	Avg
Current Financial Year: 2014/2015	3	5	3	1	4	7	2	3	2	1		2	33	2.75
Financial Year: 2013/2014	3	2	1	1	3	3			5		1	2	21	1.75
Financial Year: 2012/2013	2		1	1	3	3	2	5	10	3	2	2	34	2.83
Financial Year: 2011/2012	2	2	1	1	3	1	2	5	5	4		3	29	2.42
Financial Year: 2010/2011	7	7	7	5	5	6	7	1	3	6	3	2	59	4.92
Financial Year: 2009/2010	4	1	1	1	2	2	2	3	3	3	5	6	33	2.75
Financial Year: 2008/2009	4	1	2	1	4	3			5	6		1	27	2.25
Financial Year: 2007/2008	2	4	1	4	2	3	6	4	3	7	2	4	42	3.50
Financial Year: 2006/2007	4	4	1	4	4	1	1	3	13	2	9	5	51	4.25
Financial Year: 2005/2006	3	3	5	9	9	8	4	6	4	2	4	5	62	5.17

Burglary other

Financial Year	Apr	May	Jun	Jul	Aug	Sep	Oct	Nov	Dec	Jan	Feb	Mar	Total	Avg
Current Financial Year: 2014/2015	7	2	2	2		4	3	7	4	3	8	6	48	4.00
Financial Year: 2013/2014	4	3	5		1	2	3	4	3	4	2	4	35	2.92
Financial Year: 2012/2013	3	3	3	2	2	9	3	7	3	3	5	7	50	4.17
Financial Year: 2011/2012	11	4	11	12	2	8	5	4	6	9	1	1	74	6.17
Financial Year: 2010/2011	8	4	3	5	5	2	5	7	12	8	10	4	73	6.08
Financial Year: 2009/2010	4	2	7	6	5	5	6	11	9	8	12	6	81	6.75
Financial Year: 2008/2009	4	3	7	9	3	5	5	4	2	5	12	4	63	5.25
Financial Year: 2007/2008	15	5	10	4	23	8	7	7	9	5	3	3	99	8.25
Financial Year: 2006/2007	8	8	13	11	12	12	7	6	5	7	14	8	111	9.25
Financial Year: 2005/2006	5	9	2	16	10	6	6	8	1	7	5	10	85	7.08

Vehicle Crime

Financial Year	Apr	May	Jun	Jul	Aug	Sep	Oct	Nov	Dec	Jan	Feb	Mar	Total	Avg
Current Financial Year: 2014/2015	2	5	2	1	4	5	3	3	4	3		12	44	3.67
Financial Year: 2013/2014	8	4	4	4	3	11	4	6	7	4	4	3	62	5.17
Financial Year: 2012/2013	8	5	8	2	3	10	14	3	6	8	7	6	80	6.67
Financial Year: 2011/2012	9	8	11	13	3	6	6	6	11	7	7	11	98	8.17
Financial Year: 2010/2011	16	4	13	11	7	5	12	6	4	13	11	13	115	9.58
Financial Year: 2009/2010	5	7	6	13	7	6	7	6	8	15	3	11	94	7.83
Financial Year: 2008/2009	14	10	12	9	8	10	5	14	5	4	12	13	116	9.67
Financial Year: 2007/2008	28	7	18	17	8	13	21	5	15	18	17	46	213	17.75
Financial Year: 2006/2007	13	16	16	33	19	24	10	12	9	8	15	9	184	15.33
Financial Year: 2005/2006	9	10	9	8	13	14	4	12	14	16	13	8	130	10.83

Theft Other

Financial Year	Apr	May	Jun	Jul	Aug	Sep	Oct	Nov	Dec	Jan	Feb	Mar	Total	Avg
Current Financial Year: 2014/2015	25	24	22	27	12	16	19	22	21	22	12	23	245	20.42
Financial Year: 2013/2014	18	22	20	17	23	28	23	14	18	17	23	31	254	21.17
Financial Year: 2012/2013	23	19	24	11	25	11	15	14	17	21	17	25	222	18.50
Financial Year: 2011/2012	23	39	23	36	22	26	30	16	17	18	20	21	291	24.25
Financial Year: 2010/2011	38	29	27	24	36	24	25	22	15	18	22	35	315	26.25
Financial Year: 2009/2010	24	24	31	32	24	26	15	29	20	29	27	22	303	25.25
Financial Year: 2008/2009	43	16	26	25	32	20	37	29	24	23	28	21	324	27.00
Financial Year: 2007/2008	26	25	34	43	37	17	19	36	23	28	22	32	342	28.50
Financial Year: 2006/2007	22	22	24	37	30	31	38	35	28	23	16	22	328	27.33
Financial Year: 2005/2006	21	31	25	22	35	21	19	19	20	32	22	23	290	24.17

Criminal Damage

Financial Year	Apr	May	Jun	Jul	Aug	Sep	Oct	Nov	Dec	Jan	Feb	Mar	Total	Avg
Current Financial Year: 2014/2015	14	16	9	9	7	5	6	7	3	8	13	11	108	9.00
Financial Year: 2013/2014	8	9	5	5	9	10	7	6	8	13	10	9	99	8.25
Financial Year: 2012/2013	12	7	11	10	14	11	7	5	6	10	13	12	118	9.83
Financial Year: 2011/2012	14	20	23	12	24	10	7	14	10	8	5	18	165	13.75
Financial Year: 2010/2011	18	19	17	9	12	18	22	25	10	22	11	17	200	16.67
Financial Year: 2009/2010	11	30	14	11	17	15	12	10	16	16	10	15	177	14.75
Financial Year: 2008/2009	22	15	27	15	18	22	28	19	13	21	23	30	253	21.08
Financial Year: 2007/2008	25	20	17	20	19	28	24	17	27	20	52	29	298	24.83
Financial Year: 2006/2007	35	23	17	20	29	40	33	32	20	20	19	18	306	25.50
Financial Year: 2005/2006	10	30	16	27	10	25	30	34	30	32	25	25	294	24.50

Theft of motor vehicle

Financial Year	Apr	May	Jun	Jul	Aug	Sep	Oct	Nov	Dec	Jan	Feb	Mar	Total	Avg
Current Financial Year: 2014/2015			1			1	1					1	4	0.33
Financial Year: 2013/2014	2				1	1	1	1	4		2		12	1.00
Financial Year: 2012/2013	2	1	1	1		1	2		1		2	1	12	1.00
Financial Year: 2011/2012	3	1	2	4	1	1		1	3		3	3	22	1.83
Financial Year: 2010/2011	4		5	5	1		1	2		4	4	9	35	2.92
Financial Year: 2009/2010		1	3	5	1		1	2	4	3	1	2	23	1.92
Financial Year: 2008/2009	5	1	3		2	2	2	4	2		4	5	30	2.50
Financial Year: 2007/2008	9	2	3	8	2	4	2	2	3	2	3	4	44	3.67
Financial Year: 2006/2007	4	5	1	10	9	8	2	4	5	1	5	4	58	4.83
Financial Year: 2005/2006	4	2		2	5	4		4	4	4	1	3	33	2.75

Theft from motor vehicle

Financial Year	Apr	May	Jun	Jul	Aug	Sep	Oct	Nov	Dec	Jan	Feb	Mar	Total	Avg
Current Financial Year: 2014/2015	2	5	1	1	4	4	2	3	4	3		11	40	3.33
Financial Year: 2013/2014	6	4	4	4	2	10	3	5	3	4	2	3	50	4.17
Financial Year: 2012/2013	6	4	7	1	3	9	12	3	5	8	5	5	68	5.67
Financial Year: 2011/2012	6	7	9	9	2	5	6	5	8	7	4	8	76	6.33
Financial Year: 2010/2011	12	4	8	6	6	5	11	4	4	9	7	4	80	6.67
Financial Year: 2009/2010	5	6	3	8	6	6	6	4	4	12	2	9	71	5.92
Financial Year: 2008/2009	9	9	9	9	6	8	3	10	3	4	8	8	86	7.17
Financial Year: 2007/2008	19	5	15	9	6	9	19	3	12	16	14	42	169	14.08
Financial Year: 2006/2007	9	11	15	23	10	16	8	8	4	7	10	5	126	10.50
Financial Year: 2005/2006	5	8	9	6	8	10	4	8	10	12	12	5	97	8.08

Year to date breakdown of recorded crime and detections between 19/04/2014 and 19/04/2015

Recorded Crime

Crime Type	19/04/13	19/04/14
	to 19/04/14	to 19/04/15
Homicide	1	0
Violence with Injury	71	78
Violence without Injury	60	95
Rape	4	2
Other Sexual Offences	9	7
Robbery	3	7
Burglary Dwelling	20	34
Burglary - Non Dwelling	41	44
Vehicle Offences	65	59
Theft from the Person	12	3
Bicycle Theft	9	26
Shoplifting	134	128
Other Theft	100	86
Arson	8	5
Criminal Damage	97	105
Trafficking of Drugs	4	6
Possession of Drugs	12	18
Possession of Weapons	3	3
Public Order	6	18
Miscellaneous Crimes Against Society	6	4
Total	665	728

Solved crime

Crimes Per Day		
Crime Type	19/04/13 to 19/04/14	19/04/14 to 19/04/15
Homicide	1	0
Violence with Injury	71	78
Violence without Injury	60	95
Rape	4	2
Other Sexual Offences	9	7
Robbery	3	7
Burglary Dwelling	20	34
Burglary - Non Dwelling	41	44
Vehicle Offences	65	59
Theft from the Person	12	3
Bicycle Theft	9	26
Shoplifting	134	128
Other Theft	100	86
Arson	8	5
Criminal Damage	97	105
Trafficking of Drugs	4	6
Possession of Drugs	12	18
Possession of Weapons	3	3
Public Order	6	18
Miscellaneous Crimes Against Society	6	4
Total	665	728

Domestic Burglary

Crime Type	Recorded Crime		Solved Crimes	
	19/04/13 to 19/04/14	19/04/14 to 19/04/15	19/04/13 to 19/04/14	19/04/14 to 19/04/15
28A - Burglary In A Dwelling	16	25	5	7
28B - Attempted Burglary In A Dwelling	4	9	1	1
Total	20	34	6	8

Burglary other

Crime Type	Recorded Crime		Solved Crimes	
	19/04/13 to 19/04/14	19/04/14 to 19/04/15	19/04/13 to 19/04/14	19/04/14 to 19/04/15
	30A - Burglary In A Building Other Than A Dwelling	33	37	2
30B - Attempted Burglary In A Building Other Than A Dwelling	8	7	0	1
Total	41	44	2	4

Vehicle offences

Crime Type	Recorded Crime		Solved Crimes	
	19/04/13 to 19/04/14	19/04/14 to 19/04/15	19/04/13 to 19/04/14	19/04/14 to 19/04/15
	37.2 - Aggravated Vehicle Taking	0	1	0
45 - Theft From A Motor Vehicle	50	44	8	1
48 - Theft Or Unauthorised Taking Of Motor Vehicle	11	5	3	0
126 - Interfering With A Motor Vehicle	4	9	2	1
Total	65	59	13	3

Theft other

Crime Type	Recorded Crime		Solved Crimes	
	19/04/13 to 19/04/14	19/04/14 to 19/04/15	19/04/13 to 19/04/14	19/04/14 to 19/04/15
	35 - Blackmail	0	1	0
40 - Theft In A Dwelling Other Than From Automatic Machine Or Meter	7	10	3	2
41 - Theft By An Employee	2	4	1	4
49 - Other Theft Or Unauthorised Taking	85	55	5	3
49A - Theft Making Off Without Payment	6	16	2	3
Total	100	86	11	12

Criminal Damage

Crime Type	Recorded Crime		Solved Crimes	
	19/04/13 to 19/04/14	19/04/14 to 19/04/15	19/04/13 to 19/04/14	19/04/14 to 19/04/15
	58A - Criminal Damage- To Dwellings	22	18	6
58B - Criminal Damage - To Other Buildings	13	14	3	1
58C - Criminal Damage - To Vehicles	40	49	2	8
58D - Criminal Damage - Other	22	24	4	3
Total	97	105	15	14

Vehicle Offences

Crime Type	Recorded Crime		Solved Crimes	
	19/04/13 to 19/04/14	19/04/14 to 19/04/15	19/04/13 to 19/04/14	19/04/14 to 19/04/15
	37.2 - Aggravated Vehicle Taking	0	1	0
45 - Theft From A Motor Vehicle	50	44	8	1
48 - Theft Or Unauthorised Taking Of Motor Vehicle	11	5	3	0
126 - Interfering With A Motor Vehicle	4	9	2	1
Total	65	59	13	3

Violence with injury

Crime Type	Recorded Crime		Solved Crimes	
	19/04/13 to 19/04/14	19/04/14 to 19/04/15	19/04/13 to 19/04/14	19/04/14 to 19/04/15
	5D - Assault With Intent To Cause Serious Harm	0	2	0
8N - Assault With Injury	70	76	38	35
8P - Racially Or Religiously Aggravated Assault With Injury	1	0	1	0
Total	71	78	39	35

Violence without injury

Crime Type	Recorded Crime		Solved Crimes	
	19/04/13	19/04/14	19/04/13	19/04/14
	to	to	to	to
	19/04/14	19/04/15	19/04/14	19/04/15
3B - Threats To Kill	1	1	0	1
8L - Harassment	8	26	2	6
8M - Racially Or Religiously Aggravated Harassment (Excludes Offences Under 9b)	0	3	0	1
8Q - Stalking	1	0	0	0
104 - Assault Without Injury On A Constable	5	3	5	3
105A - Assault Without Injury	43	62	13	20
105B - Racially Or Religiously Aggravated Assault Without Injury	2	0	0	0
Total	60	95	20	31

Good news stories for Biggleswade in 2014/2015

- The Police Community Support officers (PCSO) and community Sergeant have organised a number of events in Biggleswade over the past year. On the 29/10/2014 there was an OP VISION in the town due to the potential increase of threat of house burglaries that occur due to the shorter days and Christmas fast approaching. The OP VISION was a chance for the police to work with other partners including The Community Safety Group, Biggleswade Neighbourhood Watch and the Bedfordshire Police Neighbourhood Watch officer who attended selling SMARTWATER at a discounted price. The partners joined forces and joined together for the day to offer crime prevention advice to the residents of Biggleswade. The officers visited 212 Properties in Potton Road and Hitchin Street and got 48 new Ringmaster sign ups, 7 Bobby van referrals and 32 crime prevention packs handed to the most vulnerable. The mobile police station was parked in the Town Centre for the duration.
- On the 02/04/2015 one of the local PCSO's took part in a Community Day in Biggleswade. Between 07:30 and 08:30hours, High Vis Patrols were done at the train station. At 10:00 the officer conducted foot patrols in the town centre for half an hour. From 10:30 to 11:30 patrols were conducted in the town centre with the Westminster Drug and alcohol Project staff. Finally the PCSO spent the rest of the afternoon on foot patrol in the town centre visiting all the local shops.
- The mobile police POD which is currently in Sandy will be moving to Biggleswade hopefully at the end of April. It will be located in the Dan Albone car park in Shortmead Street. There will be police surgeries taking place at the POD and it will give members of the public another base to contact officers who do not necessary want to come into the main police station. It will also be another base for officers to complete paperwork as they now have ipad's which are aimed to be used out in the community so more time can be spent patrolling.
- The Community Safety group have paid an excellent part in the local town and are always willing to help. Last year the group donated money which was used to purchase over 320 personal attack alarms and over 300 handbag & purse bells which were used to give to victims

of crime or handed out at our events such as OP VISION. More recent, money is being donated from the group to purchase a number of car air fresheners with personalised slogans which can be handed out to victims of vehicle crime and to commuters to promote parking sensibly. The group regularly volunteer their own time to conduct Streetwatch and Speedwatch patrols in various locations in the town. They are always happy and eager to help at any event and are a great asset to the Biggleswade Community.

- There is a Community 'Pride In' engagement day planned for Biggleswade on the 16/06/2015. Further details about the day will be available in due course. A variety of partners and organisations will come together on the day promoting safety and other useful information to members of public all free of charge.



Cllr Mrs H Ramsay felt that she was not qualified to make comment on the crime figures, but is happy to take any queries to pass on to Cllr Wilson after the meeting.

6. RESOLUTION AND QUESTIONS

There were no resolutions and questions raised, however Cllr Mrs Hazel Ramsay stated that for future reference any resolutions and questions need to be received by the Town Council seven days before the next Annual Meeting.

7. OPEN FORUM

The Chairman asked for questions to be taken at this point:

- Finance Report – no questions
- Public Land and Open Spaces – no questions
- Town Council Management – no questions

MOPs raised questions regarding the placing of the POD and voiced concerns over lack of information to the public on this project, particularly with regard to safeguarding children in the area.

This is a CBC initiative. The Town Clerk said that a lot of discussion had already taken place, but that future meetings were ongoing where the reasons behind the POD will be fully explained to the public. Our Partners are looking at all the emails/correspondence voicing public concerns and these comments will be taken into account. MOP felt that they would have liked to have been informed of the reasons before the initiative had been agreed. Cllr Ramsay asked MOPs to keep a diary with any concerns and more information will be released as soon as we have the date of the meeting

The meeting closed at 8.05pm.